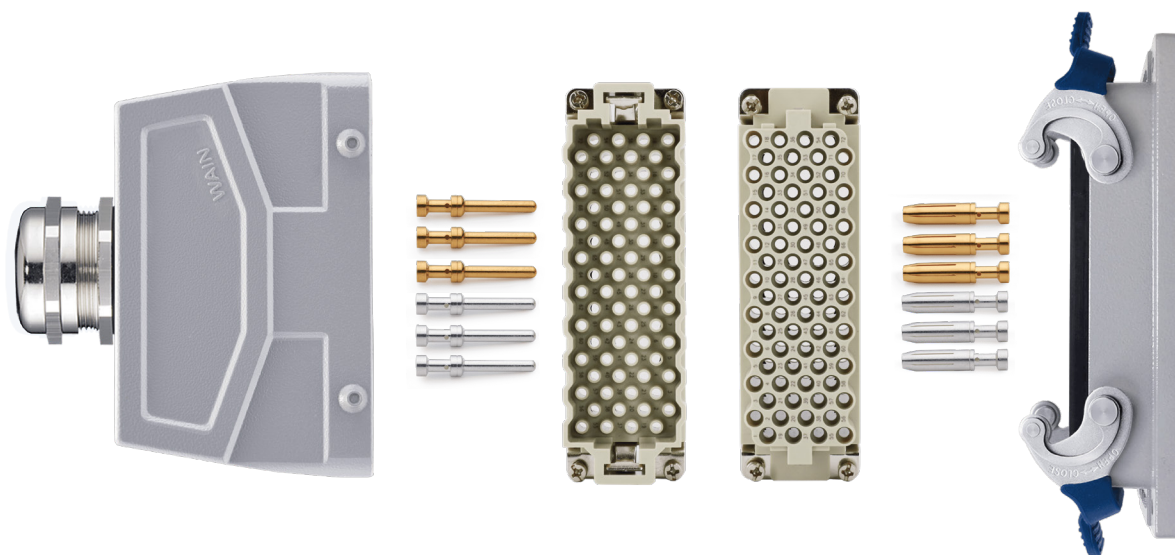


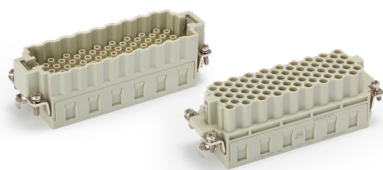


## HEEE SERIES

Ultra high density type insert



## HEEE SERIES ultra high density type insert



### Technical characteristics

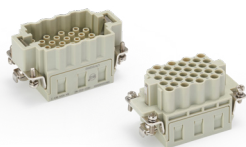
Specifications	DIN EN 60 664	DIN EN 61 984
Approvals		
Inserts		
Number of contacts	32+PE,72+PE	
Electrical data acc. to EN 61 984		
-Rated current	16A	
-Rated voltage	400V	
-Rated impulse voltage	6kV	
-Pollution degree	3	
Insulation resistance	$\geq 10^{10}\Omega$	
Material	polycarbonate	
Limiting temperatures	-40°C ...+125°C	
Flammability acc. to UL 94	V0	
Mechanical working life(mating cycles)	$\geq 500$	
Contacts		
Material	copper alloy	
Surface	hard-gold plated	
	hard-silver plated	
Contact resistance	$\leq 1\text{m}\Omega$	
Crimp terminal		
-Wire gauge	0.14-4.0mm <sup>2</sup>	
-AWG	26-12	
-Stripping length	7.5mm	
Tools		
Crimping tool	TL02G(0.5-4mm <sup>2</sup> )	
	TL02(0.14-0.37mm <sup>2</sup> )	
Contact removal tool	TL01	

## HEEE-032 Ultra high density type insert

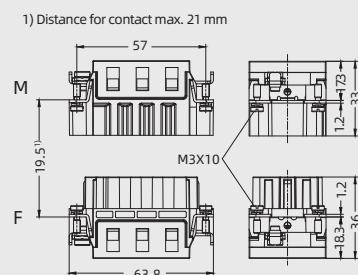
400V 16A 32+ 

## Inserts

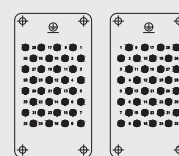
Hoods/Housings: size 10B, please find the details on page 15-39~15-69.

Crimp terminal  
order crimp contacts separately

Insert	Designation	Order No.
Male	HEEE-032-MC	136 032 010 0001
Female	HEEE-032-FC	136 032 020 0001



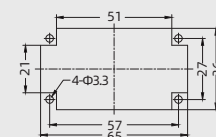
Contact arrangement view from termination side



M

F

Panel cut out for inserts for use without hoods/housings



## Crimp contacts

## Crimp contacts 16A

Contact resistance  $\leq 1\text{m}\Omega$   
silver plated

gold plated



More crimp contacts 16A see P13-04.

## Tools

Crimping tool



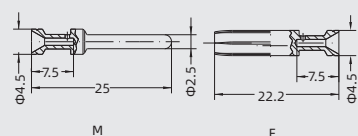
Contact removal tool



Male	Order No.	Female	Order No.
CESM-0.37	101 019 110 0301	CESF-0.37	101 019 120 0301
CESM-0.50	101 019 110 0401	CESF-0.50	101 019 120 0401
CESM-0.75	101 019 110 0601	CESF-0.75	101 019 120 0601
CESM-1.0	101 019 110 0801	CESF-1.0	101 019 120 0801
CESM-1.5	101 019 110 0901	CESF-1.5	101 019 120 0901
CESM-2.5	101 019 110 1001	CESF-2.5	101 019 120 1001
CESM-3.0	101 019 110 1101	CESF-3.0	101 019 120 1101
CESM-4.0	101 019 110 1201	CESF-4.0	101 019 120 1201
CEGM-0.37	101 019 210 0301	CEGF-0.37	101 019 220 0301
CEGM-0.50	101 019 210 0401	CEGF-0.50	101 019 220 0401
CEGM-0.75	101 019 210 0601	CEGF-0.75	101 019 220 0601
CEGM-1.0	101 019 210 0801	CEGF-1.0	101 019 220 0801
CEGM-1.5	101 019 210 0901	CEGF-1.5	101 019 220 0901
CEGM-2.5	101 019 210 1001	CEGF-2.5	101 019 220 1001
CEGM-3.0	101 019 210 1101	CEGF-3.0	101 019 220 1101
CEGM-4.0	101 019 210 1201	CEGF-4.0	101 019 220 1201

Wire gauge	Designation	Order No.
0.14-4mm <sup>2</sup>	TL02G	198 001 001 0011
Wire gauge: 0.14-0.37mm <sup>2</sup> please select TL02 Crimping tool.		
Application	Designation	Order No.
for crimp contacts 16A	TL01	198 001 000 0002

More tools detail please find the page 32-03~32-06.



Identification	Wire gauge	Stripping length
no groove	0.14-0.37 mm <sup>2</sup>   AWG 26-22	7.5mm
no groove	0.5 mm <sup>2</sup>   AWG 20	7.5mm
1 groove	0.75 mm <sup>2</sup>   AWG 18	7.5mm
1 groove	1 mm <sup>2</sup>   AWG 18	7.5mm
2 grooves	1.5 mm <sup>2</sup>   AWG 16	7.5mm
3 grooves	2.5 mm <sup>2</sup>   AWG 14	7.5mm
wide groove	3 mm <sup>2</sup>   AWG 12	7.5mm
no groove	4 mm <sup>2</sup>   AWG 12	7.5mm

When the wire gauge is less than 0.75mm<sup>2</sup>, it's better to use the auxiliary pin assembly tool TL15.

Notes: The tools for crimp terminal may influence the product quality and stability. Please select the tools recognized by our company.

05E-03 WAIN ELECTRICAL

## HEEE-072 Ultra high density type insert

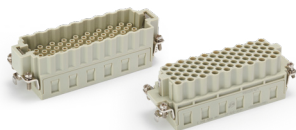
400V 16A 72+ 

## Inserts

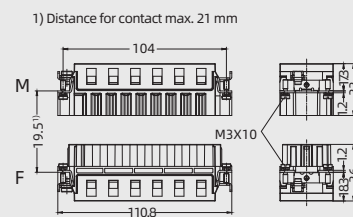
Hoods/Housings: size 24B, please find the details on page 15-108~15-150.

## Crimp terminal

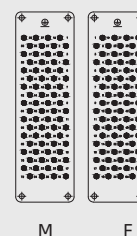
order crimp contacts separately



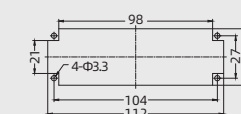
Insert	Designation	Order No.
Male	HEEE-072-MC	136 072 010 0001
Female	HEEE-072-FC	136 072 020 0001



Contact arrangement view from termination side



Panel cut out for inserts for use without hoods/housings



## Crimp contacts

## Crimp contacts 16A

Contact resistance  $\leq 1\text{m}\Omega$   
silver plated

gold plated



More crimp contacts 16A see P13-04.

## Tools

## Crimping tool

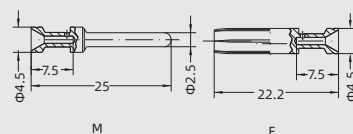


## Contact removal tool



Male	Order No.	Female	Order No.
CESM-0.37	101 019 110 0301	CESF-0.37	101 019 120 0301
CESM-0.50	101 019 110 0401	CESF-0.50	101 019 120 0401
CESM-0.75	101 019 110 0601	CESF-0.75	101 019 120 0601
CESM-1.0	101 019 110 0801	CESF-1.0	101 019 120 0801
CESM-1.5	101 019 110 0901	CESF-1.5	101 019 120 0901
CESM-2.5	101 019 110 1001	CESF-2.5	101 019 120 1001
CESM-3.0	101 019 110 1101	CESF-3.0	101 019 120 1101
CESM-4.0	101 019 110 1201	CESF-4.0	101 019 120 1201
CEGM-0.37	101 019 210 0301	CEGF-0.37	101 019 220 0301
CEGM-0.50	101 019 210 0401	CEGF-0.50	101 019 220 0401
CEGM-0.75	101 019 210 0601	CEGF-0.75	101 019 220 0601
CEGM-1.0	101 019 210 0801	CEGF-1.0	101 019 220 0801
CEGM-1.5	101 019 210 0901	CEGF-1.5	101 019 220 0901
CEGM-2.5	101 019 210 1001	CEGF-2.5	101 019 220 1001
CEGM-3.0	101 019 210 1101	CEGF-3.0	101 019 220 1101
CEGM-4.0	101 019 210 1201	CEGF-4.0	101 019 220 1201

Wire gauge	Designation	Order No.
0.14-4mm <sup>2</sup>	TL02G	198 001 001 0011
Wire gauge: 0.14-0.37mm <sup>2</sup> please select TL02 Crimping tool.		
Application	Designation	Order No.
for crimp contacts 16A	TL01	198 001 000 0002
More tools detail please find the page 32-03~32-06.		



Identification	Wire gauge	Stripping length
no groove	0.14-0.37 mm <sup>2</sup>   AWG 26-22	7.5mm
no groove	0.5 mm <sup>2</sup>   AWG 20	7.5mm
1 groove	0.75 mm <sup>2</sup>   AWG 18	7.5mm
1 groove	1 mm <sup>2</sup>   AWG 18	7.5mm
2 grooves	1.5 mm <sup>2</sup>   AWG 16	7.5mm
3 grooves	2.5 mm <sup>2</sup>   AWG 14	7.5mm
wide groove	3 mm <sup>2</sup>   AWG 12	7.5mm
no groove	4 mm <sup>2</sup>   AWG 12	7.5mm

When the wire gauge is less than 0.75mm<sup>2</sup>, it's better to use the auxiliary pin assembly tool TL15.

Notes: The tools for crimp terminal may influence the product quality and stability. Please select the tools recognized by our company.